
Application

Carte Clef

Installation Manual for Drivers and Software



Renault SAS	Driver Installation Guide	Version 1.3 12/06/2012
-------------	----------------------------------	---------------------------

SOMMAIRE

1.	INTRODUCTION.....	3
2	KEYCARD READER INSTALLATION PRE-REQUISITE.....	4
3	INSTALLING THE DRIVERS AND CONNECTING THE SCANNER.	5
4	INSTALLING THE "CARTECLEF" SOFTWARE	6
5	CONFIGURING THE CARTECLEF APPLICATION.....	15
6	NO DETECTION BY WINDOWS:	16
7	DEVICE DRIVER INSTALLATION WITH WINDOWS 7	17
8	ERRORS MESSAGES WHEN STARTING UP THE APPLICATION.....	21

Renault SAS	Driver Installation Guide	Version 1.3 12/06/2012
-------------	----------------------------------	---------------------------

1. Introduction

This document is a guide for installing the drivers and software of the RENAULT key card scanners, supplied by JOHNSON CONTROL.

This equipment is used to communicate with key cards of RENAULT vehicles, which store information such as:

- ❑ Vehicle's s manufacturing data
- ❑ Dynamic data, and status of the vehicle the last time it was stopped
- ❑ Customer-specific data.

The scanner, used by RENAULT's partners to read this data, operates in a PC environment, such as a reception site - the owner drives his vehicle into (dealership, garage...) or a logistics base (vehicle carrier, fleet manager).

The operating systems supported are Windows 98, XP, 2000, Windows 7

The scanner is connected to a PC, through a USB connector.

The PC uses a driver to control this device.

It is used to exchange information with the key card, i.e. read from it or write to it.

Also, the equipment supplied includes a software package, named « Carteclef», which must be installed on the PC, and which converts the data contained in the key card.

This data can be used by a standalone reception device (a PC) or online (e.g. DMS).

This document is a step-by-step guide for installing the drivers and the software.

Renault SAS	Driver Installation Guide	Version 1.3 12/06/2012
-------------	----------------------------------	---------------------------

2 KeyCard reader installation pre-requisite

For correct use of the KeyCard reader the following is the minimum configuration for the user station :

- IBM 486 PC Compatible or Higher
- Pentium processor or minimum equivalent 500 Mhz
- 64 Mb minimum live memory
- Communication port : 1 USB 1.0 Port minimum available
- Hard disk main partition with 3 Mb of available disk space
- CD-Rom or DVD Reader
- Mouse
- **Windows 98** (2nd edition with USB management) or **Windows 2000** or **Windows XP** or **Windows 7 (32 bits)**
- **Internet Explorer 5.05 or higher** (Installation of IE 6 SP1 is available on the CD-Rom « INSTALL KEY CARD READER » in the directory MSIE)

Renault SAS	Driver Installation Guide	Version 1.3 12/06/2012
-------------	----------------------------------	---------------------------

3 Installing the drivers and connecting the scanner.

1- Insert the « INSTALLER LECTEUR CARTE CLE » CD-ROM containing the installation software.

2- Connect the scanner to an available USB port (usually on the rear panel, but also on the front panel of recent PCs).

Automatic hardware detection indicates the presence of the "JOHNSON CONTROL / TRACETEL RFID" scanner – If undetected, refer to chapter 5.

3- Follow the Windows installation wizard to install the scanner's USB driver

JOHNSON CONTROL /TRACETEL RFID

Window		Action	
1	«Hardware Wizard detected ».	Validate « <i>Install the software from a list or a specific location</i> » Click:	<i>Next</i>
2	« Hardware Wizard detected ».	Click:	<i>Browse</i>
3	« Search a folder »	Select the location of the Driver in the CD-Rom: Windows 98: \Drivers\drivers usb 98 Windows 2000/XP: \Drivers\drivers usb 2k xp Click:	<i>OK</i>
4	« Hardware Wizard detected ».	Click:	<i>Next</i>
5	« Hardware Wizard detected ».	Wait « <i>End of New hardware detected added Wizard</i> » Click:	<i>End</i>
6	« Hardware Wizard detected ». Windows detects the second Driver <i>Texas Instruments UMP Serial Port</i>	Validate « <i>Install the software automatically</i> » Click:	<i>Next</i>
7	« Hardware installation ».	Click:	<i>Continue</i>
8	« Hardware Wizard detected »	« <i>End of New hardware detected added Wizard</i> » Click:	<i>End</i>

The hardware is installed, ready to operate.

4 Installing the "Carteclef" software

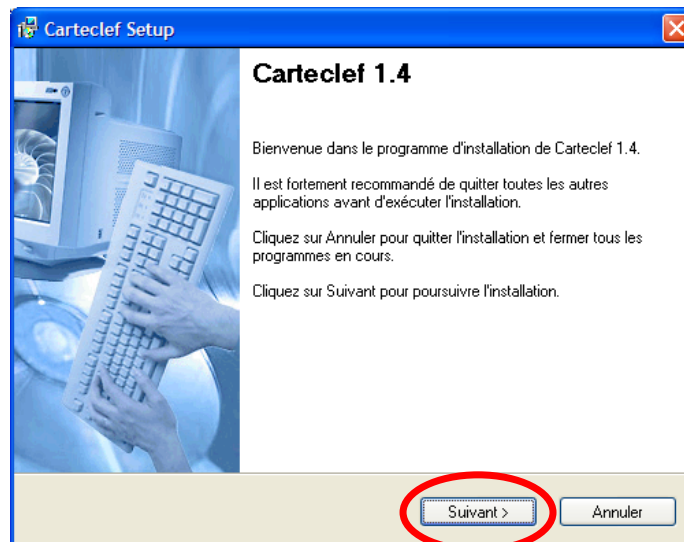
1- Do not disconnect the scanner from its USB port

The CD-ROM contains under D:\ (or E, F...):

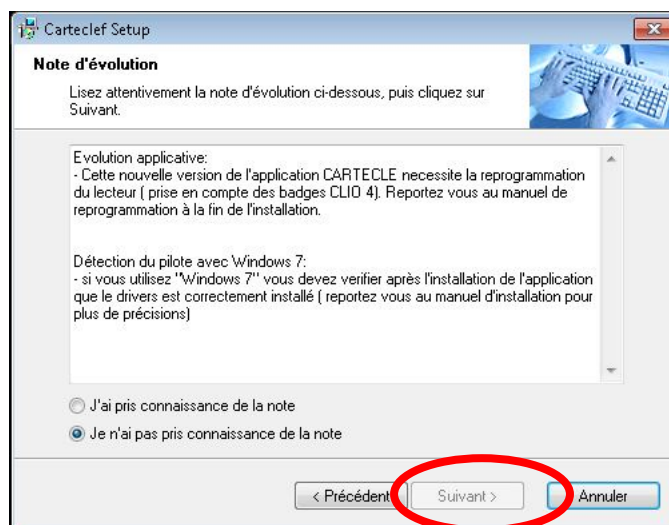
- The **DOTNETFX.exe** component (Microsoft .NET Framework V1.1)
- The software installing Carteclef, **Setup 1.X..exe**.

2- Start the global installation by double-clicking **Setup 1.X..exe**

In the welcome and recommendation window of « Carteclef » click **Next**



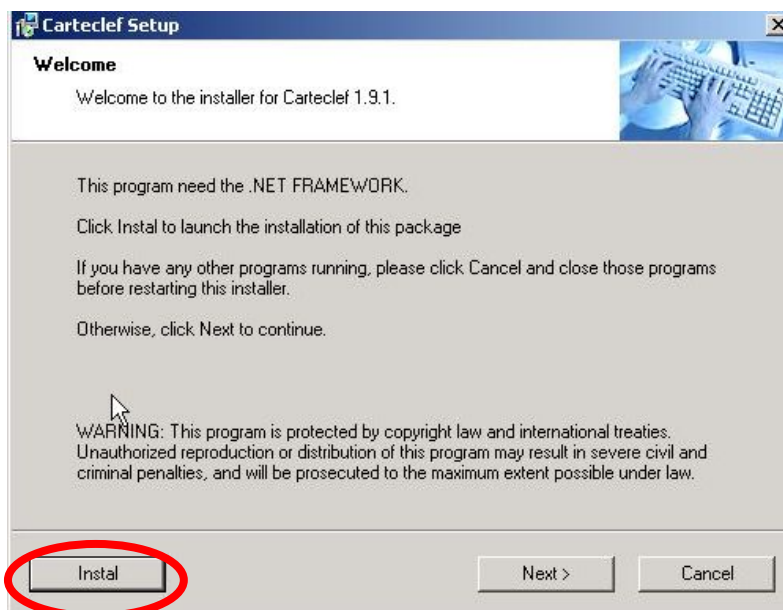
3- In the following screen, click **I Agree**, and then click **Next**



Renault SAS	Driver Installation Guide	Version 1.3 12/06/2012
-------------	----------------------------------	---------------------------

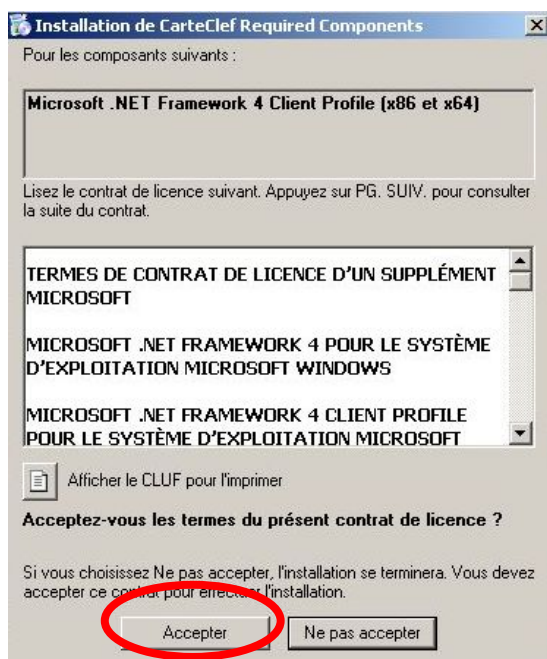
In the following screen, select the installation of the **.NET Framework** component, then the installation of the **Carteclef** software

4- Click the **Install** button

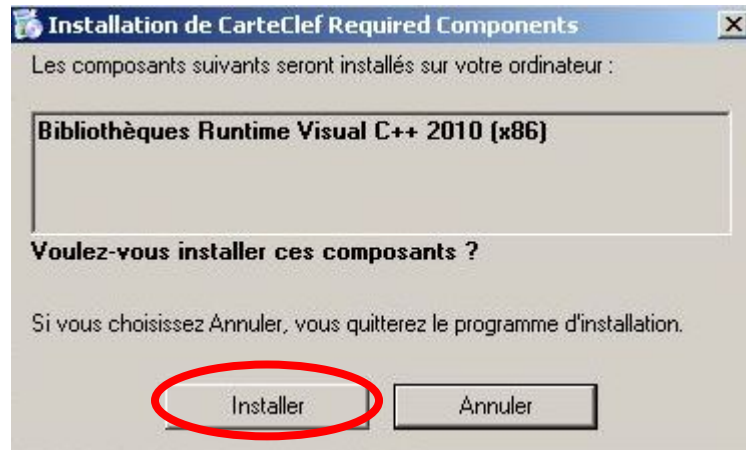


5- Validate the license by clicking “Accept”

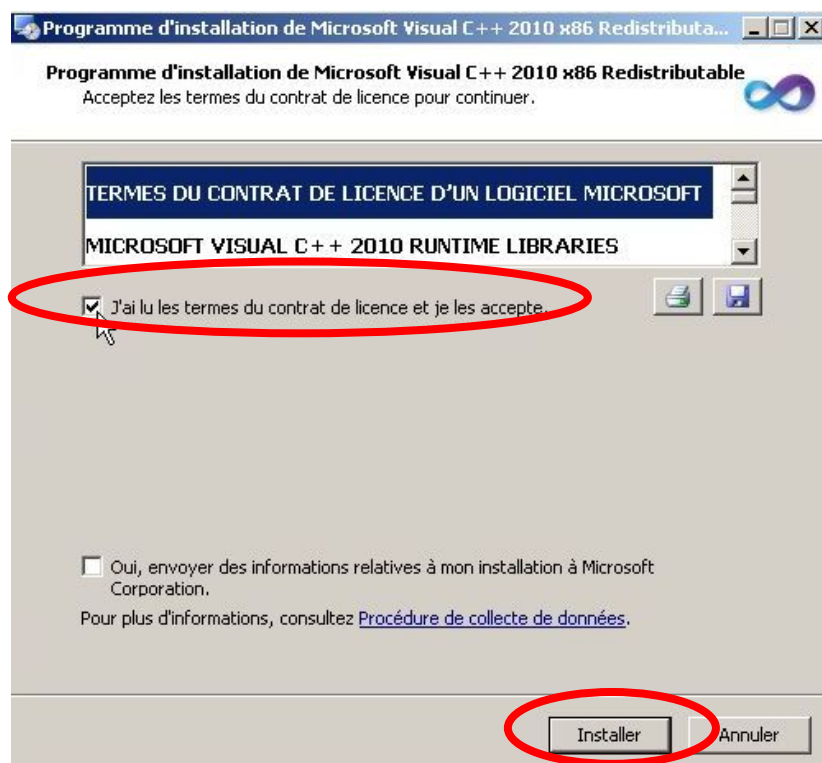
Your system will check whether it already contains a more recent version of the component Microsoft .NET Framework V1.1, and whether the minimum version 5.05 of Internet Explorer is installed, in which case this installation will be cancelled.



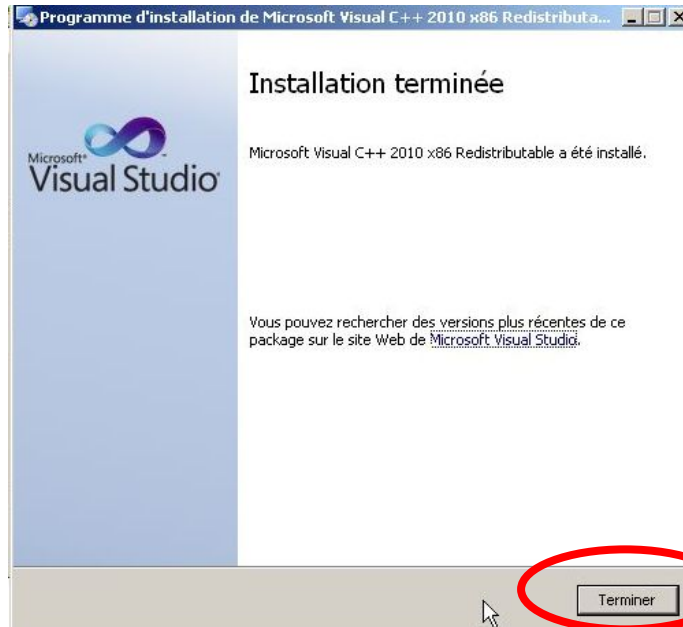
6- Click the **Install** button



7- In the following screen, activate the **I Agree** option, and then click **Install**

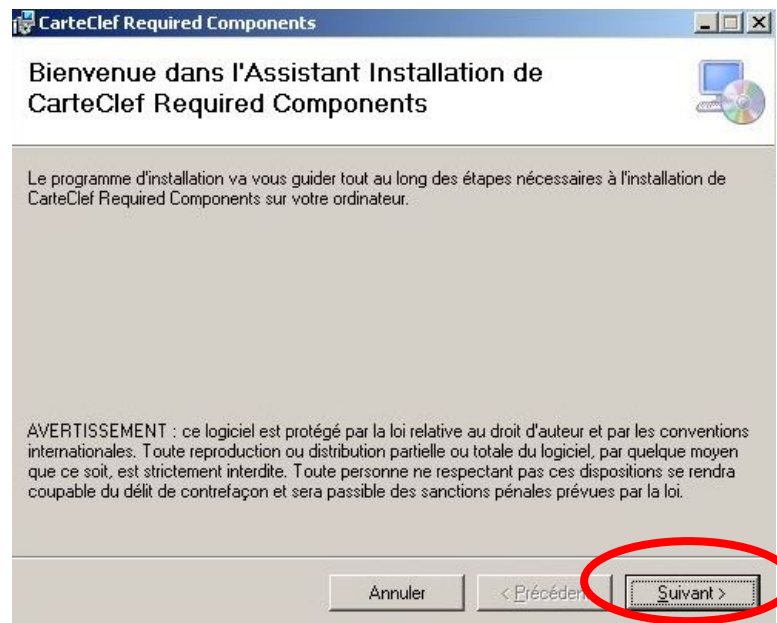


8- Click Finish

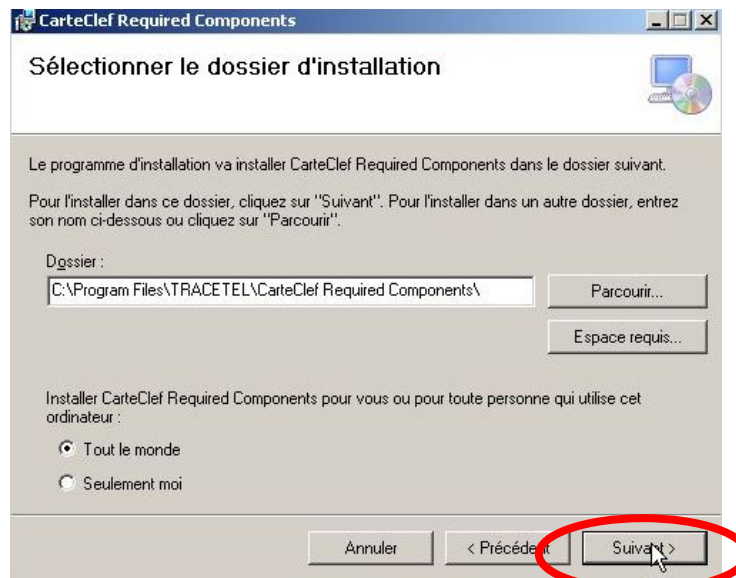


A new window "**Carteclef Required Components**" is going to open

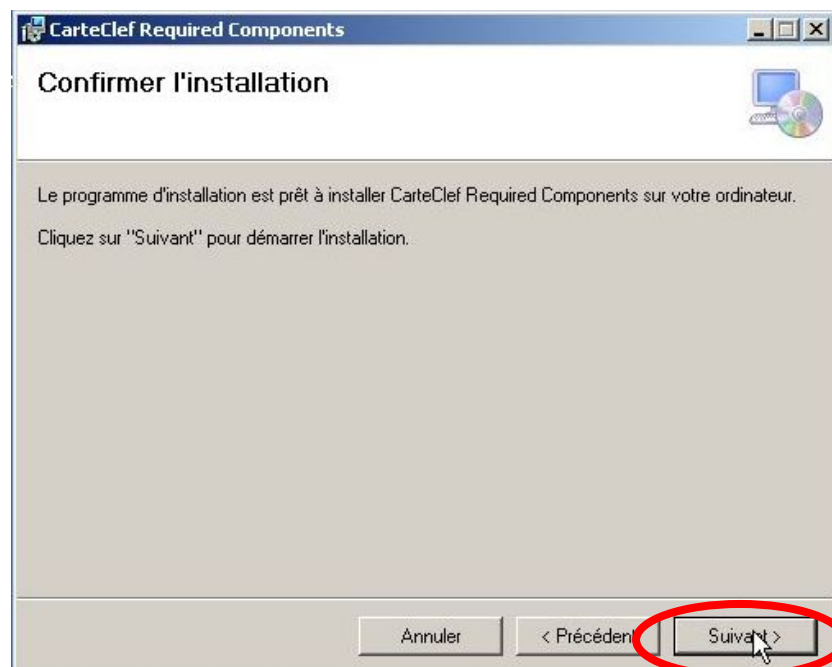
9- Click **Next**



10- Click **Next**

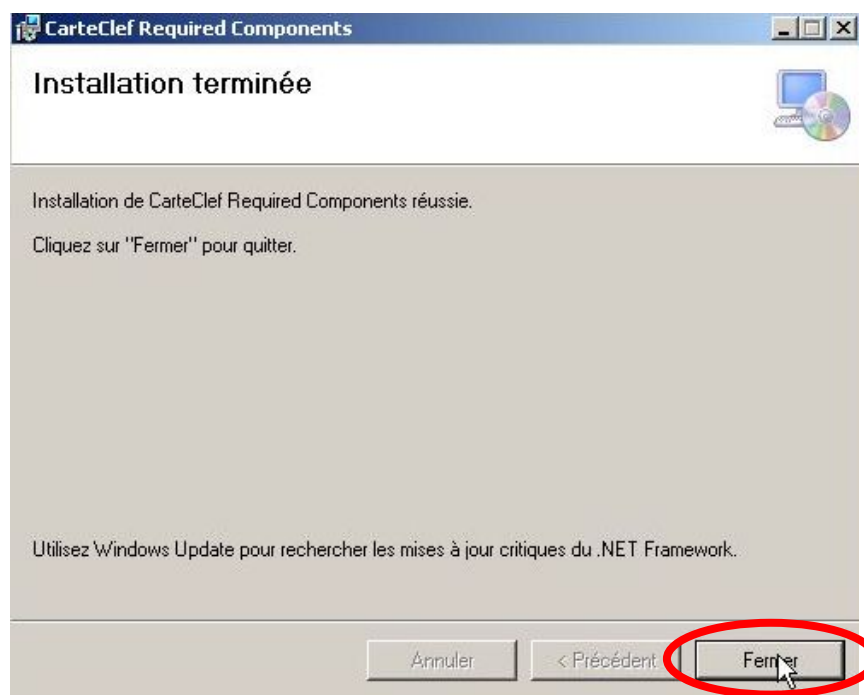


11- Click **Next**



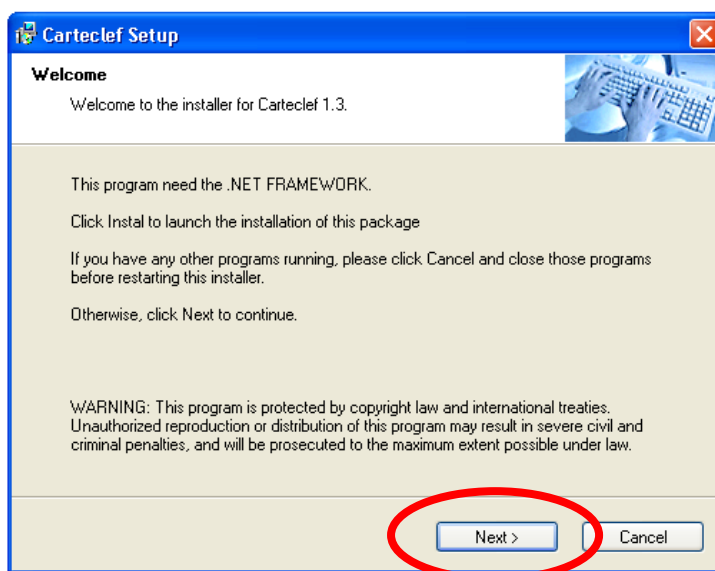
Renault SAS	Driver Installation Guide	Version 1.3 12/06/2012
-------------	----------------------------------	---------------------------

12- Click **Finish**

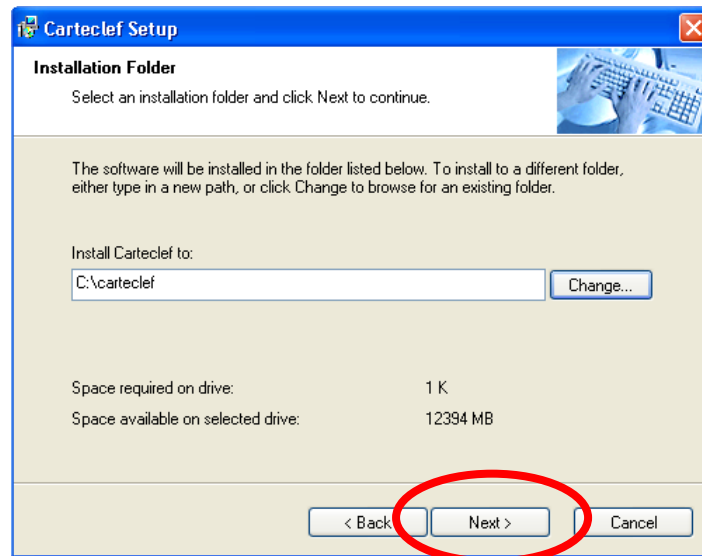


Now install the Carteclef software as follows

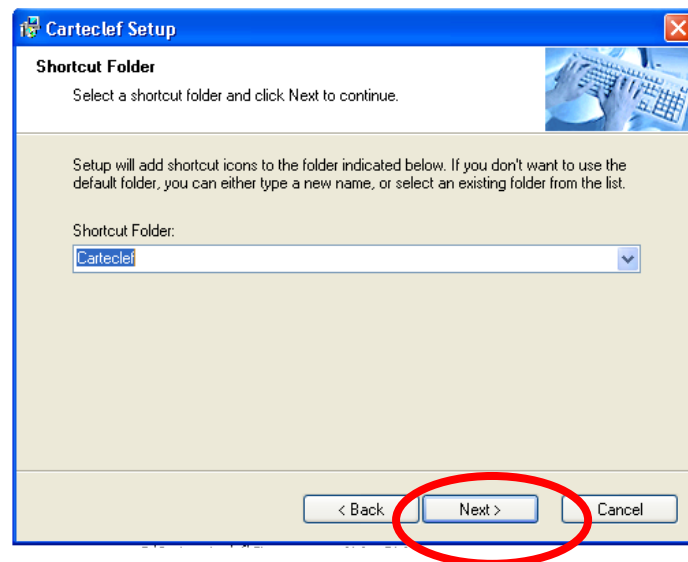
13- Click **Next**



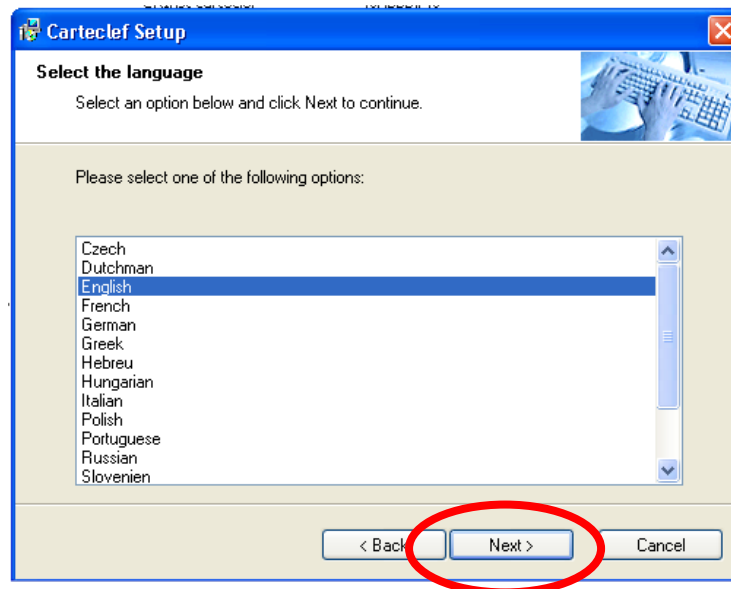
14- Click **Next**



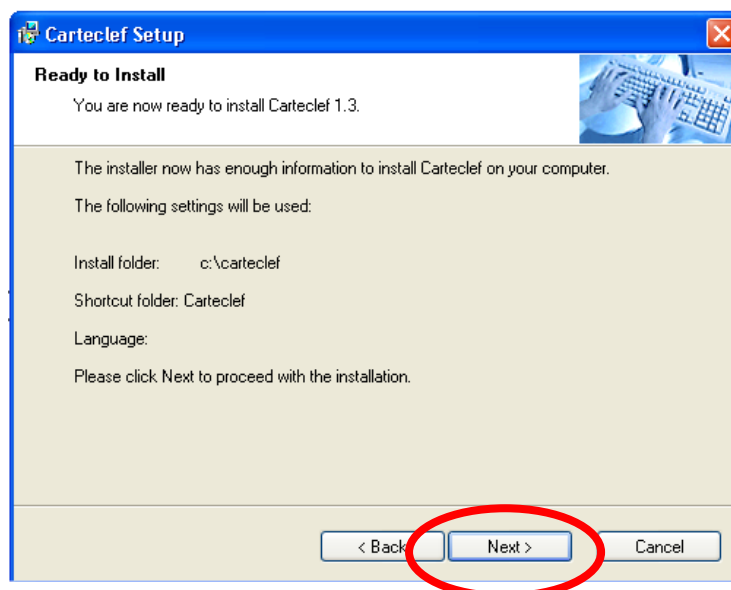
15- Click **Next**



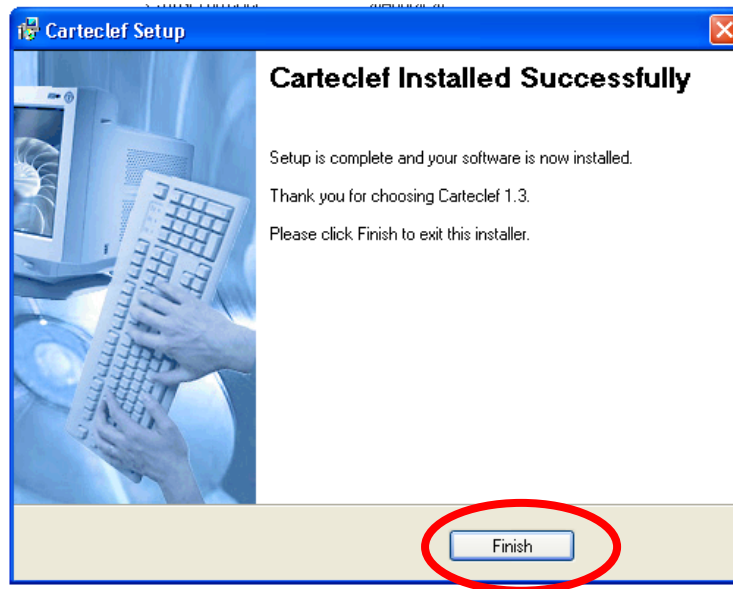
16- Select the language to install, and click **Next**.



17- Launch the installation by clicking **Next**, and wait for it to complete.



18- The screen above confirms the installation was successful, click **Finish**



WARNING

- If the firmware of your KeyCard Reader is not up-to-date, the message below will pop up. If this happens, please refer to the Manual worker of reprogramming.



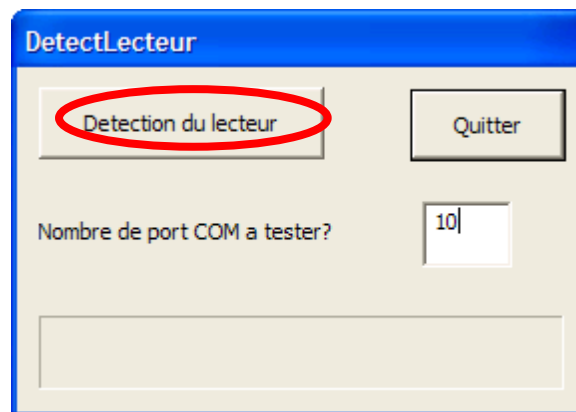
- If your platform is using Windows 7 please refer to the chapter 7 of manual worker for the detection.

5 Configuring the Carteclef application

1- Do not disconnect the scanner from its USB port.

2- Before using the Carteclef software, detect the scanner using the *DetectLecteur* programme included to this effect. This programme is located in the *Carteclef* programme shortcut, in the Start menu, created during the installation.

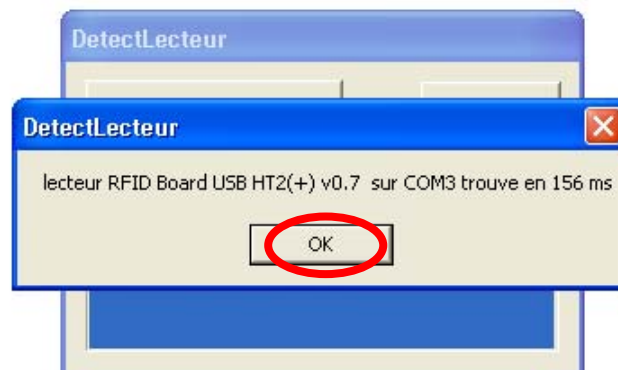
- Launch the programme, and follow the instructions



Click the '**Detection du lecteur**' button

The system starts its test loop on the COM1 port, the search's progression is shown by a blue bar. Once the scanner is detected, the bar's progression stops, and the system shows the following message in the DetectLecteur window:

RFID Board USB HT2(+) v0.7



The software then indicates the allocation of the USB port – Click **OK** -
The scanner is configured.

Renault SAS	Driver Installation Guide	Version 1.3 12/06/2012
-------------	----------------------------------	---------------------------

6 No detection by Windows:

As with any device connected to a USB port, Windows may not detect the Carteclef scanner.

This problem can be due to 2 causes.

1. You have not installed the 2 USB drivers:

- a- Disconnect and reconnect the scanner, and wait for the « Hardware detected wizard » window to appear. Resume installation from chapter 3, step 1.
- b- If the wizard does not display, open the Windows configuration panel – launch the *Add hardware* programme, and follow the instructions to detect the USB device. When the scanner is detected, resume installation from chapter 2, step 3.
- c- If no USB peripheral is detected – contact your system administrator – it is most likely that your configuration has a problem over the USB ports (conflict, a USB controller or focusing anomaly, etc...).

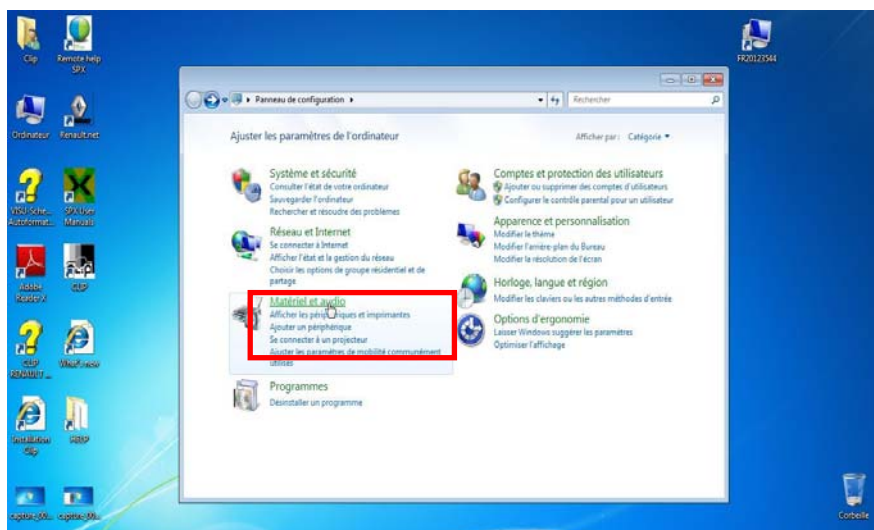
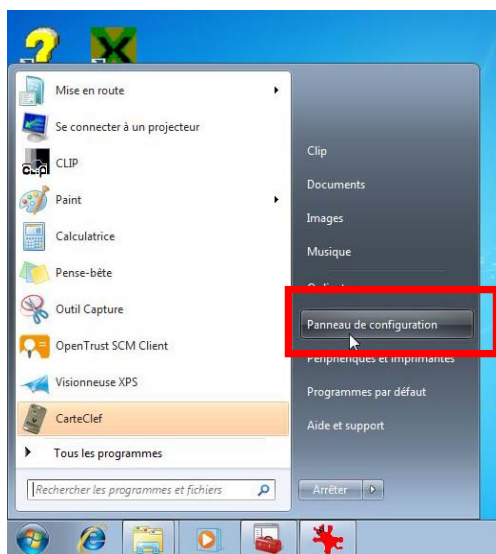
2. The 2 USB drivers are installed, but the application displays the message « Scanner access error »

- a- Check that the application has not been launched twice. In this case, close the 2 *Carteclef* applications, and restart.
- b- Disconnect and reconnect the scanner – launch the *DetectLecteur* programme in the *Carteclef* menu, and resume configuration in chapter 4, step 2.

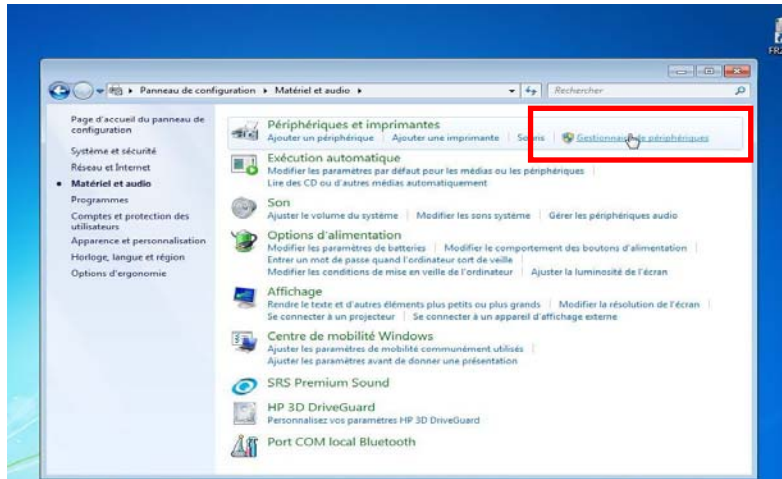
7 Device driver installation with Windows 7

IF YOU ARE USING "WINDOWS 7", YOU MUST VERIFY THAT THE DRIVER IS CORRECTLY INSTALLED IN THE DEVICE MATERIAL

1 Select « Device material » folder

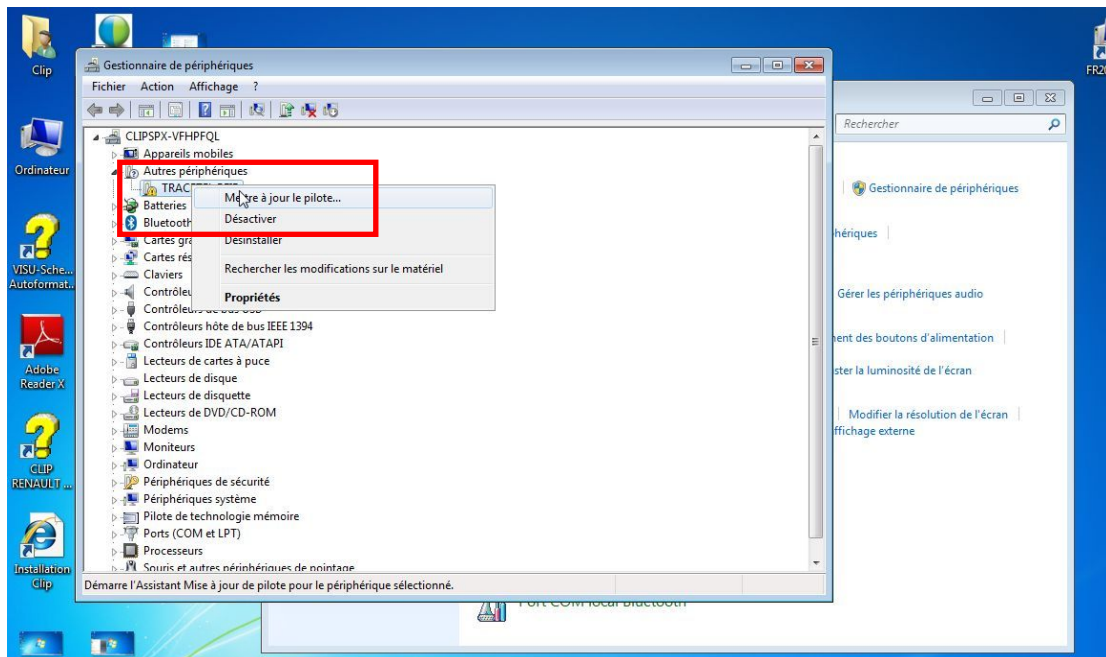


2 Click on « **Device material** »

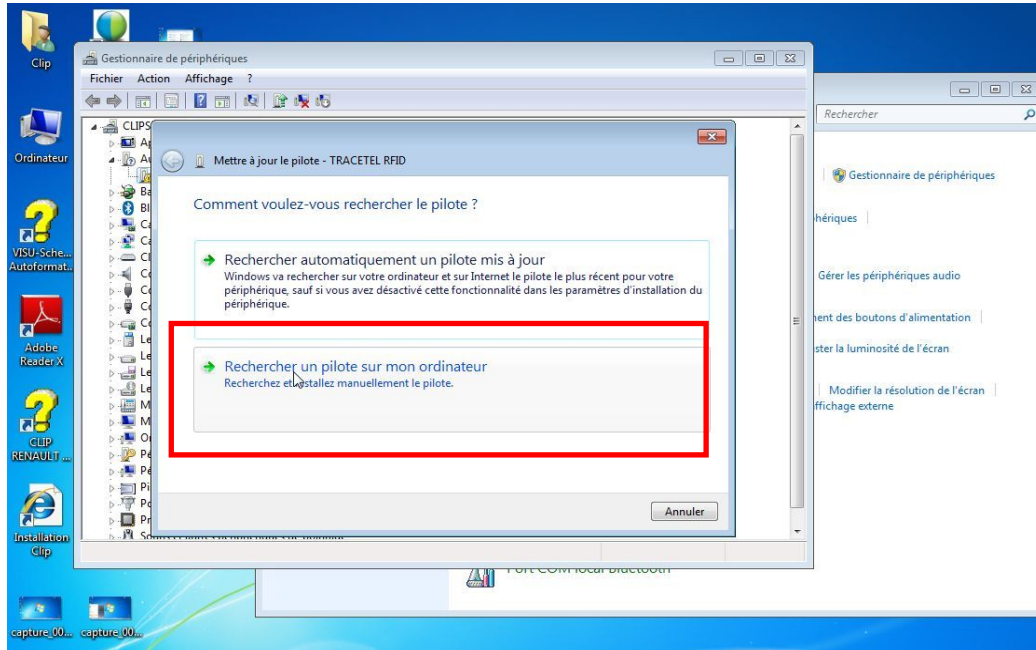


3 - If the driver of « TRACETEL RFID » appears with an interrogation or exclamation mark, , click right “**update the driver**”.

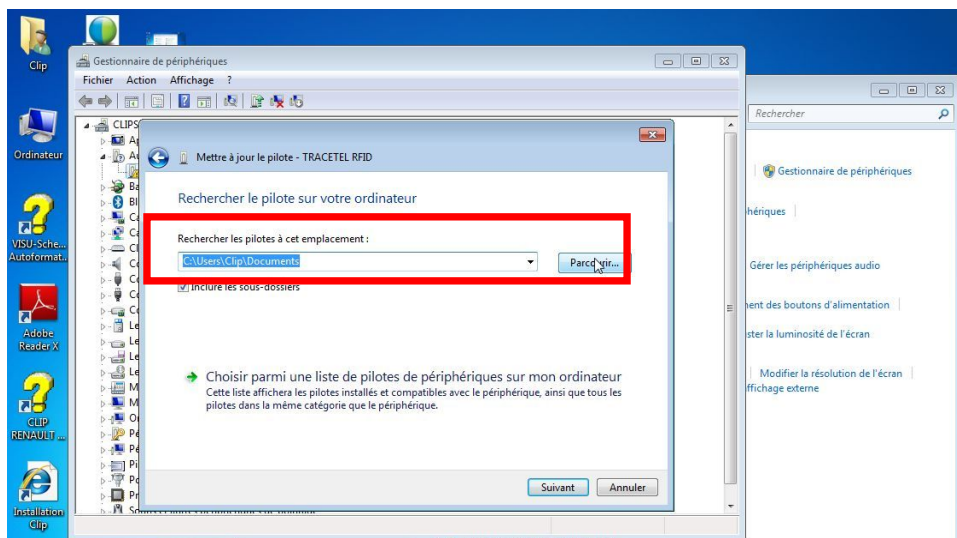
- If the driver of « TRACETEL RFID » does not appear with an interrogation or exclamation mark, the procedure is ended with no problem.



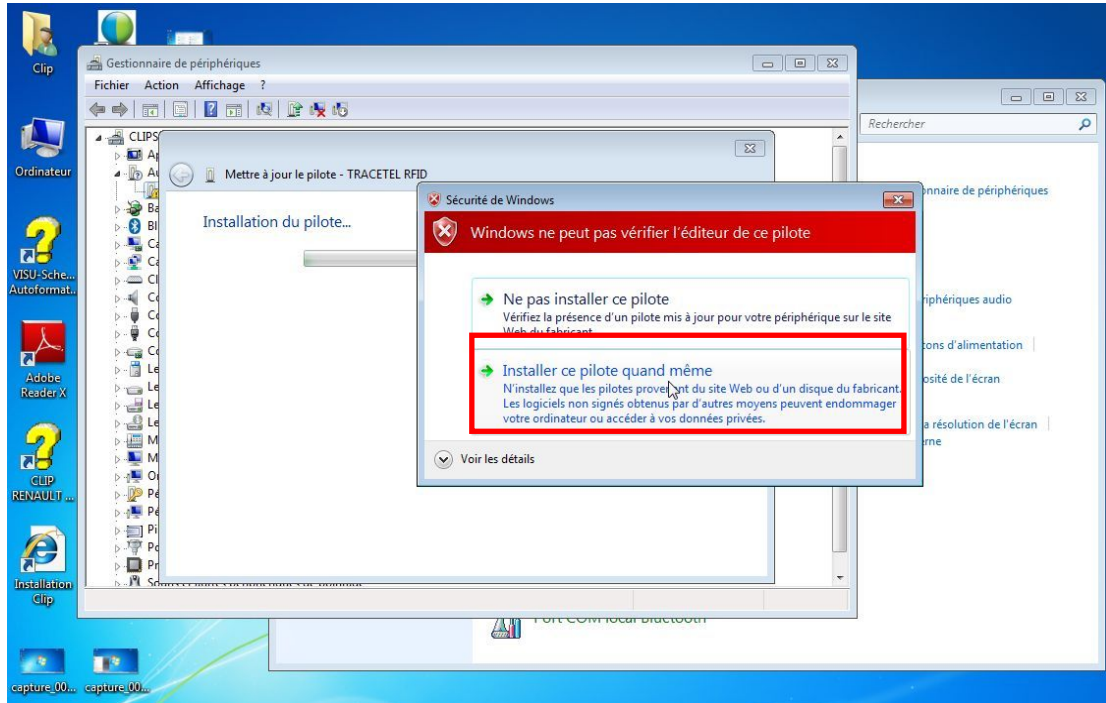
4 Click on **“Found manually the driver on your computer”**



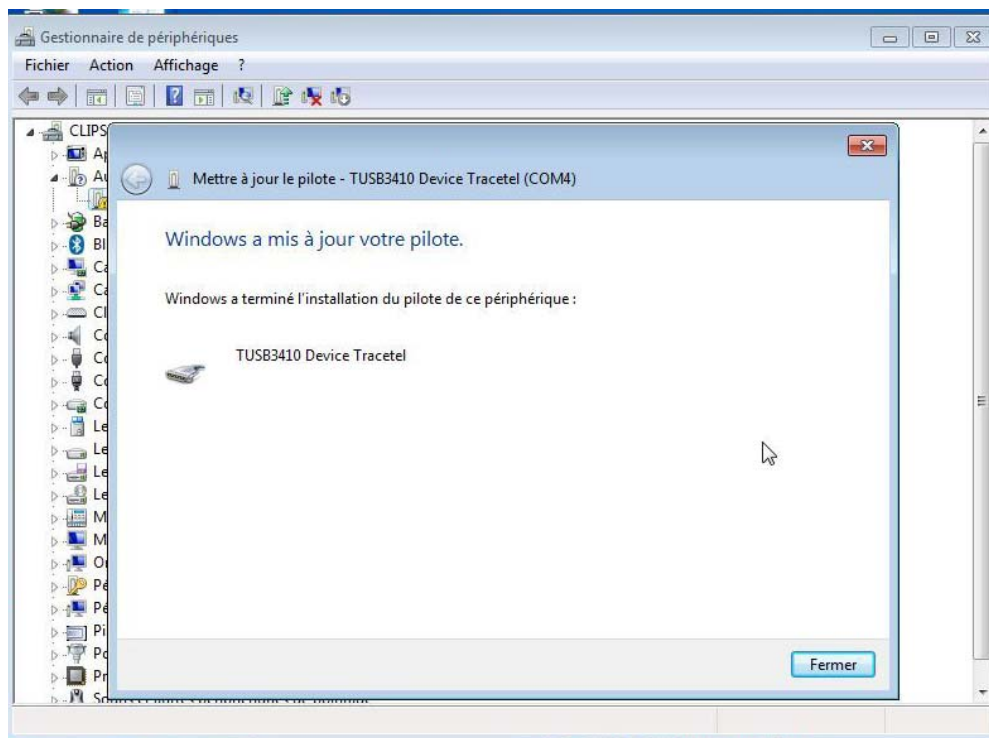
5 Click on **“Browse”** and select the driver on **“C:\CARTECLEF\DRIVERS\WIN-32”**



6 Click on “Install this driver software anyway”



7 Click on « Finish »



Renault SAS	Driver Installation Guide	Version 1.3 12/06/2012
-------------	----------------------------------	---------------------------

8 Errors messages when starting up the application

- If you have this error message when launching the application, please update Firmware of the Key Card Reader by following the procedure of reprogramming.



- If you have this error message when launching the application, please update Framework by following the procedure in the chapter 4 from the point n°4.

